

THE ICONIC FORD FALCON XB GT

SCALE
1:8



Details for the Central Console

Published weekly
UK: £10.99 AUS: \$21.99



9 772976 581050



74 >

POST-APOCALYPTIC EDITION

THE ICONIC FORD FALCON XB GT

ISSUE 74

ASSEMBLY GUIDE

3

The CB radio and gear shift are fitted to the console, and the console and dashboard are fixed to the floor assembly.

YOUR MODEL

You will be building a 1:8 scale replica of a customised 1973 Ford Falcon XB GT. Features include a lift-up bonnet that reveals a detailed engine, opening doors, wind-down windows and an 'active' steering wheel. A remote-control fob illuminates the main lights, brake lights and indicators.

Scale: 1:8
Length: 62cm
Width: 25cm
Height: 19cm
Weight: 7+kg



Official
Licensed Product

Ford Motor Company
trademarks and trade dress
used under licence to GRE
for Groupe ELIGOR

CUSTOMER SERVICE, SUBSCRIPTIONS & BACK ORDERS

Please visit hachettepartworks.com/contact to get in touch.

Published by Hachette Partworks Ltd
4th Floor, Jordan House, 47 Brunswick Place,
London, N1 6EB
www.hachettepartworks.com



© 2025 Hachette Partworks Ltd
© 2025 Ford Motor Company
Distributed in the UK and Republic of Ireland by Marketforce.
Printed in the United Kingdom
ISSN 2976-5811

Complete in 130 issues.

ALL RIGHTS RESERVED

Items may vary from those shown.
All parts belong to a kit. Collectors' item for adults. Not suitable for children under 14. Some parts may have sharp edges, please handle them with care.

The installation of electronic parts must always be carried out by an adult. When replacing batteries, use the same type of batteries. Please ensure that the battery compartment is securely fastened before you use the model again. Used batteries should be recycled. Please make sure to check with your local council how batteries should be disposed of in your area. Batteries can present a choking danger to small children and may cause serious harm if ingested. Do not leave them lying around and keep any spare batteries locked away at all times.

The editor's policy is to use papers that are natural, renewable and recyclable products and made from wood grown in sustainable forests. The logging and manufacturing processes are expected to conform to the environmental regulations of the country of origin.

In the event of a significant increase in production and transport costs, the publisher reserves the right to modify its selling prices.

MANAGING DIRECTOR – Isabelle Couderc
EDITORIAL DIRECTOR – Helen Nally
MARKETING DIRECTOR – Elise Windmill
PRODUCTION DIRECTOR – Sema Sant Anna
SENIOR PRODUCTION MANAGER – Lee Matthews
MANAGING EDITOR – Sarah Gale
PROJECT EDITOR – Gary Webb
DISTRIBUTION MANAGER – Paul Smith
PRODUCT MANAGER – Rhys Myrner



For our
environmental
policy in full
please scan the
QR code here



**NOT SUITABLE FOR CHILDREN
UNDER THE AGE OF 14.**
This product is not a toy and is
not intended for use in play.

Editorial and design: Windmill Books Ltd

Picture credits: Front cover: Jess Esposito and David Burton: main; Richard Bryden: bl, Shutterstock: Steven Giles background.

Step-by-step photography: Richard Bryden
Model photography: Jess Esposito and David Burton

Windmill Books have made every attempt to contact the copyright holder, if you have any information please contact Sophie Mortimer: smortimer@windmillbooks.co.uk

t=top, c=centre, b=bottom, l=left, r=right, u=upper



Stage 74: Details for the Central Console

The CB radio and gear shift are fitted to the console, and the console and dashboard are fixed to the floor.

List of parts:



74A Lower part of console

74B CB radio box

74C CB radio cover

74D CB radio handset

74E Gear shift boot

74F Frame for gear shift boot

74G Gear shift

74H Blower button

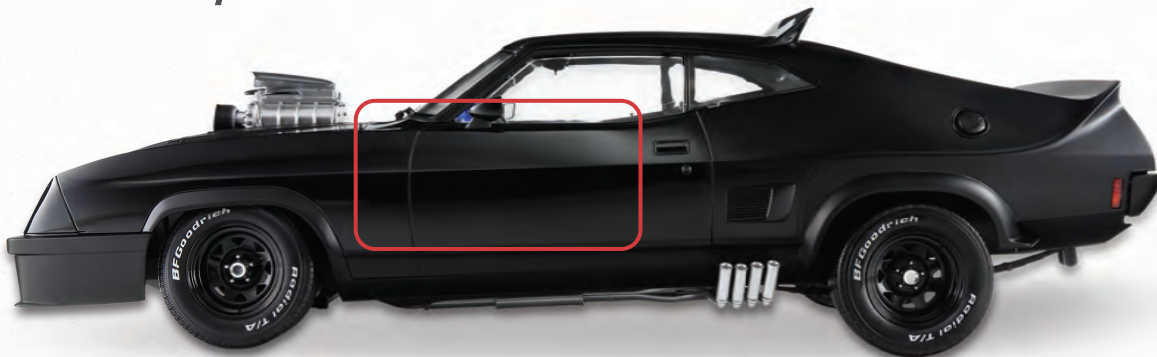
PS05 Six* 2.3 x 4mm PB screws

PS11 Three* 2.3 x 4mm PWB screws

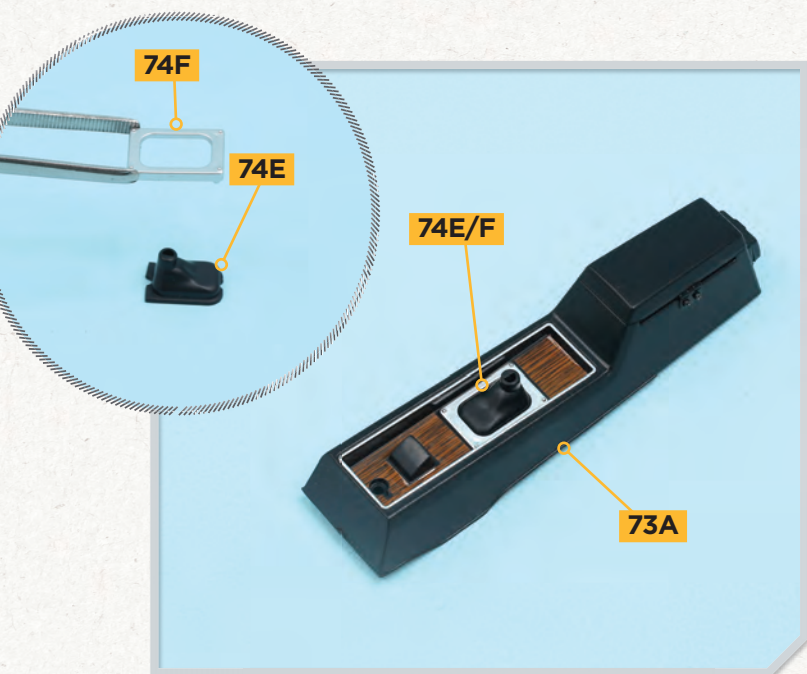
PS12 Three* 1.2 x 4mm PB screws

*Including spare
PB = Pan head for plastic
PWB = Flange head for plastic

Area of assembly



Stage 74: Details for the Central Console



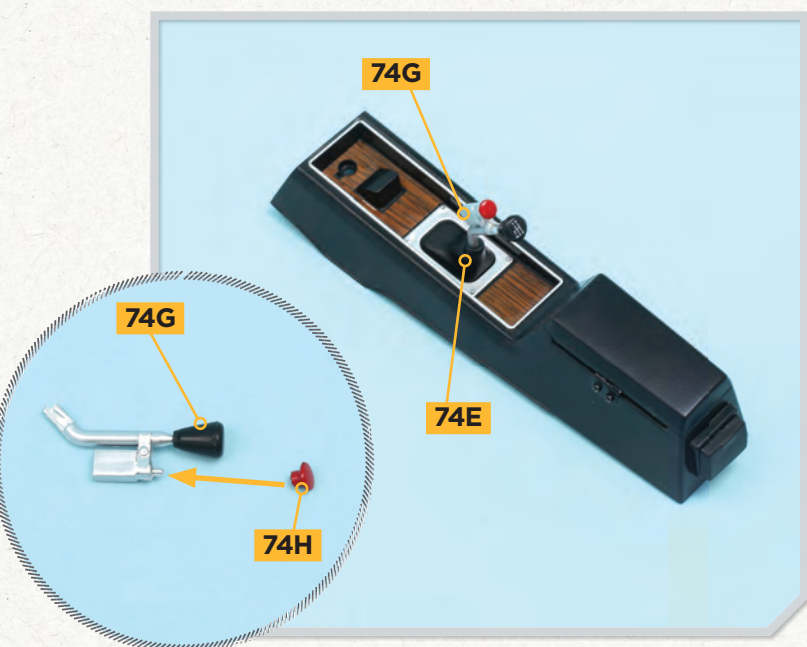
STEP 1

Fit the frame for the gear shift boot **74F** to the gear shift boot **74E**. Note the orientation of the boot: the frame is shaped so that the edges of the boot fit neatly inside the rim. Fit the assembly into the console **73A**: screw sockets and two pegs on part **74F** fit into holes in part **73A**.



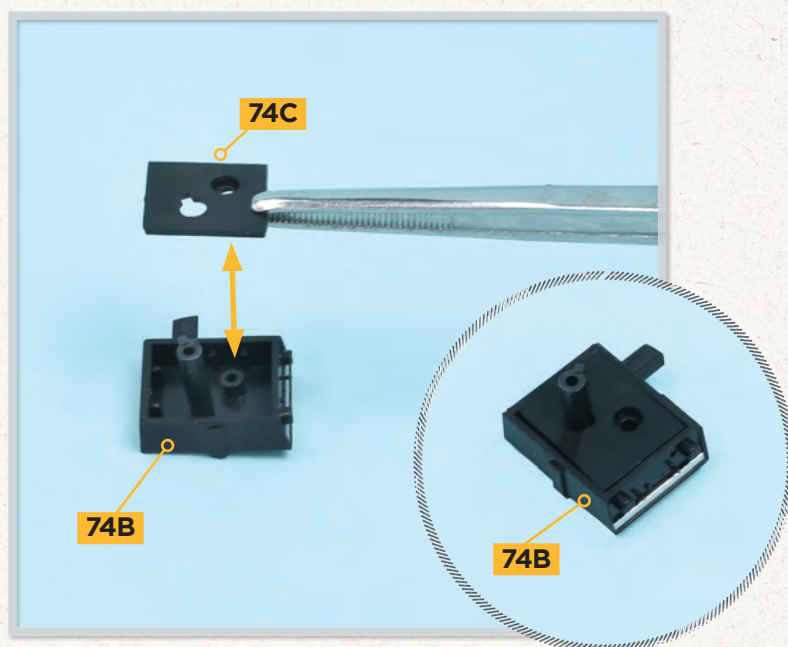
STEP 2

Turn the console **73A** over and fix the gear shift assembly in place with two **PS12** screws.



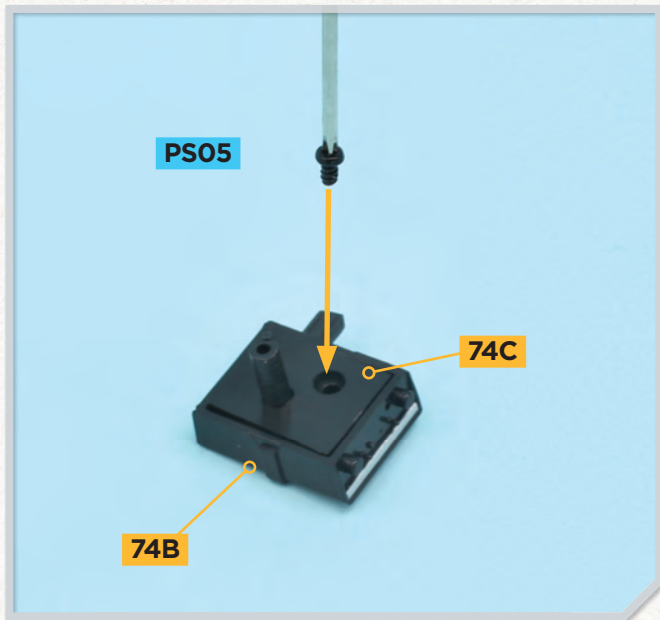
STEP 3

Take the gear shift **74G** and fit the blower button **74H** to a peg on part **74G** as indicated (inset, above). Fit the D-shaped end of the gear shift into the corresponding hole in the top of the gear shift boot **74E**.



STEP 4

Take the CB radio box **74B** and fit the cover **74C** over it: note that the long raised screw socket with a tab on one side of part **74B** fits into the shaped hole in part **74C** and a pair of screw holes are aligned (arrow).



STEP 5

Fix the cover **74C** to the box **74B** with a **PS05** screw.



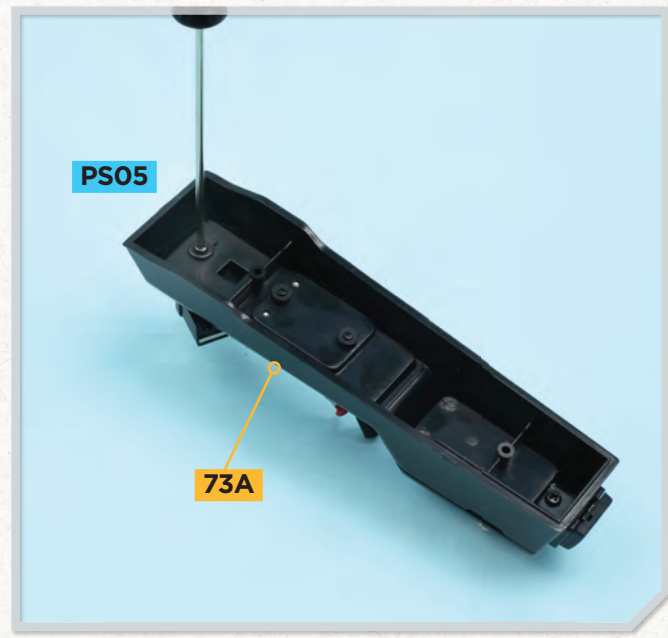
STEP 6

Fit the end of the wire of the CB radio handset **74D** into a small hole in the side of the CB radio box **74B** (arrow). Fit the handset to the rectangular peg on the side of the box (inset, right).



STEP 7

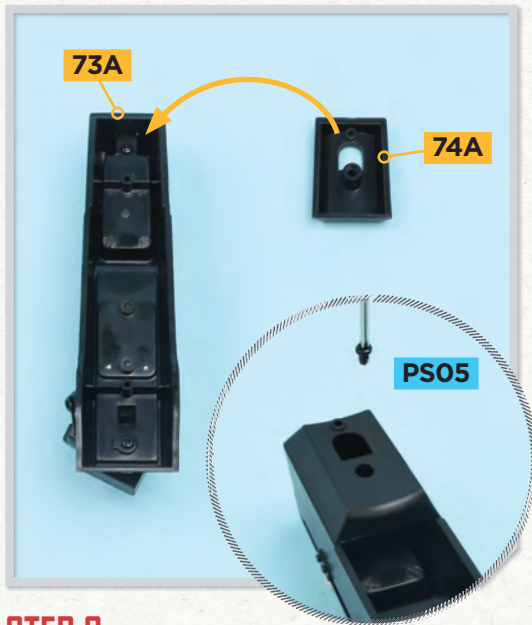
Fit the CB radio box assembly **74B/74C/74D** to the console **73A**: the long raised screw socket with a tab on part **74B** fits into a corresponding hole in the console so that the CB radio is held at an angle on the box.



STEP 8

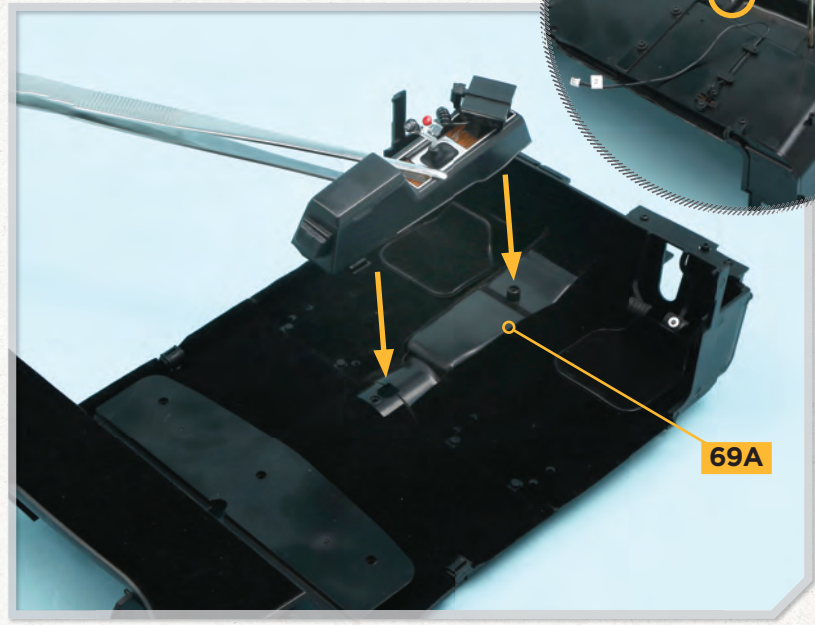
Holding the radio assembly in place, turn the console **73A** over and fix in place with a **PS05** screw.

Stage 74: Details for the Central Console



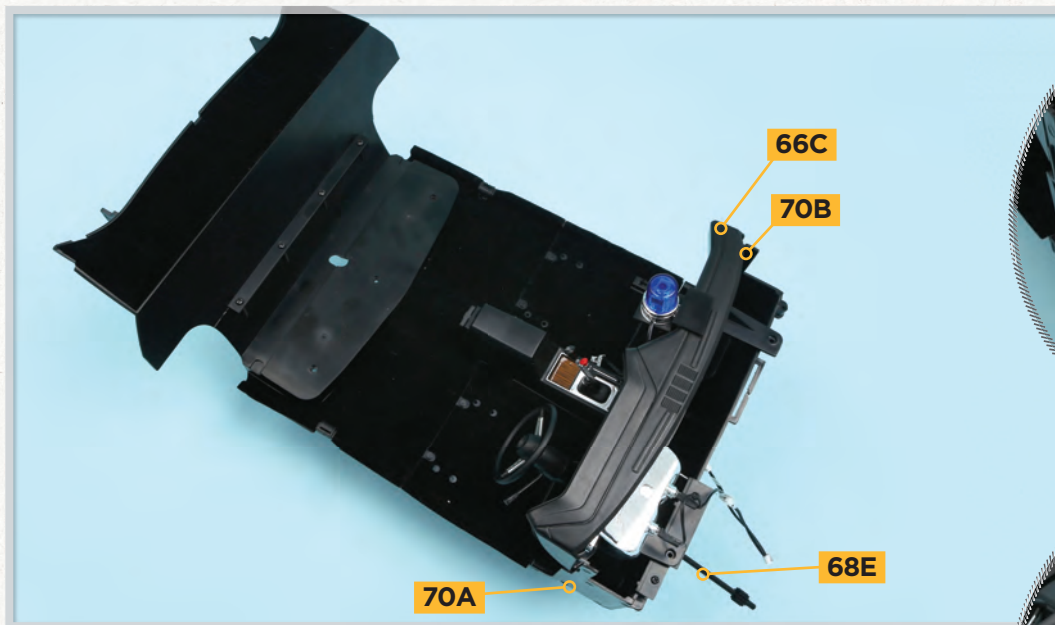
STEP 9

Fit the lower part of the console **74A** on the underside of the console **73A** using a **PS05** screw.



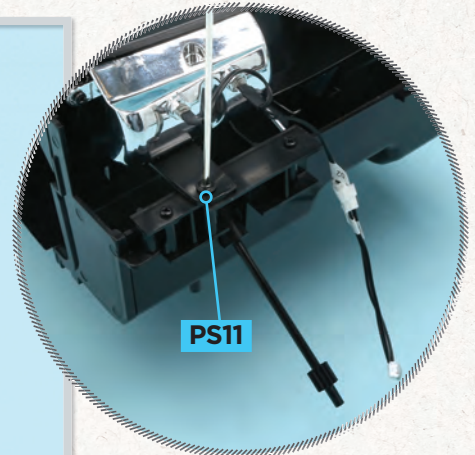
STEP 10

Take the floor assembly from issue 72. Fit the console assembly in place on part **69A** at the front of the floor assembly so that screw holes are aligned as indicated. Turn the floor over so that you can fix the console in place with two **PS05** screws (inset).



STEP 11

Turn the assembly right side up. Take the dashboard assembly from issue 68 and check how it fits: the steering shaft **68E** passes through a hole in the front of the floor. Check that no cables are trapped between the dashboard and the floor. Small tabs on the side panels **70A** and **70B** fit inside the ends of the dashboard housing **66C**. There are two large tabs on the dashboard with screw holes that align with sockets on the front of the floor. Fix in place with two **PS11** screws (insets).





STEP 12

Take the cable **67J** labelled 13 (from the emergency light) and pass it through the gap between the dashboard and the floor. At the front of the assembly there are two 'arms' with a slit between them. Pass the cable through the slit so that it is held in position.



STEP 13

Find the cable **69B** labelled 14 (from the switch) on the underside of the assembly. Bring it to the front of the assembly and pass the cable through the slit between the arms.

COMPLETED ASSEMBLY

The console and dashboard have been fitted to the floor assembly.



COMING IN ISSUE 75



• ASSEMBLY GUIDE

The base of the front left passenger seat is assembled, and an adjustment lever is fitted.

• CUSTOM MADE

The Bumpers'n'Beats show is promoted as Western Australia's biggest automotive street festival. It is held in the city of Banbury, a port city west of Perth.

NEW PARTS

Left passenger seat base frame, cover and foam, seat adjustment lever end piece, seat adjustment lever and screws.



Published weekly
UK: £10.99
AUS: \$21.99



hachettepartworks.com/FordFalcon